

VRLA Rechargeable Battery

MPL135-12X

FEATURES

- Maintenance free(no water topping-up required)
- No free acid(Non-spillable battery)
- Can be used in any orientation(excluding used inverted)
- The battery is designed with very lower resistance and exceeding high power performance
- Long life expectancy 10 years in float application
- Flame-arrestor is installed to ensure safety
- Carry handles for easy installation
- Absorbent Glass Mat technology for efficient gas recombination

APPLICATIONS

- UPS
- Telecom
- Golf-Carts
- Cable TV
- Power station
- Marine



SPECIFICATIONS

Nominal Voltage	12V		
Nominal Capacity	10 Hour Rate (13.0A, 10.5V)	130.0 Ah	
	5 Hour Rate (22.6A, 10.5V)	113.0 Ah	
	1 Hour Rate (93.0A, 9.6V)	93.0Ah	
	15 Min Rate 560W@1.67VPC	70.0 Ah	
Approx. Weight	41.1Kg(90.6lbs.)		
Terminals	I3		
Max. Charge Current	39.0 A		
Short Circuit Current	3500 A		
Operating Temperature Range	Charge	0°C~50°C(32°F~122°F)	
	Discharge	-20°C~60°C(-4°F~140°F)	
	Storage	-20°C~50°C(-4°F~122°F)	
Self Discharge	< 3% per month (25°C)		
Internal Resistance	≤ 2.9mΩ (Fully Charged)		

CONTAINER MATERIAL

- Standard: PP(UL94 HB)
Model Name: MPL135-12X
- Optional: Flame Retardant PP (UL94 V-0)
Model Name: MPL135-12XFR

Certificate as below:

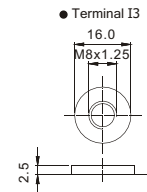
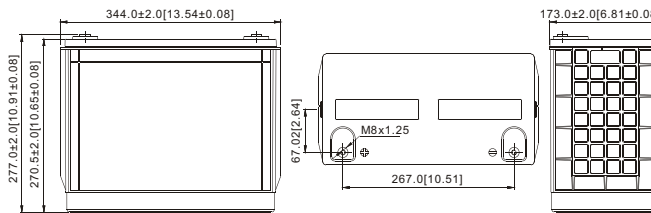


Compliance of the standards as below:

- IEC60896-21/22 ● JIS C 8704-2
- GB/T 19638.2

DIMENSION(mm/inch) OUTER DIMENSIONS TERMINAL TYPE

- Length
344±2.0 (13.54±0.08)
- Width
173±2.0 (6.81±0.08)
- Container Height
270.5±2.0 (10.65±0.08)
- Total Height
277±2.0 (10.91±0.08)



Terminal Hardware Initial Torque:
I3(10.0Nm±5%)

Constant power discharge characteristics at 25 °C/77 °F Unit: W

Discharge Time F.V. (V/cell)	Discharge Time									
	5 Min	10 Min	15 Min	20 Min	25 Min	30 Min	40 Min	50 Min	60 Min	90 Min
1.80V	4134	3467	2997	2387	2069	1817	1463	1227	1064.0	756.0
1.75V	4525	3681	3170	2480	2130	1863	1493	1253	1080.0	768.0
1.70V	4888	3832	3279	2544	2172	1893	1514	1268	1092.0	777.0
1.67V	5113	3919	3360	2574	2192	1903	1523	1277	1100.8	780.6
1.65V	5220	3950	3369	2592	2207	1914	1532	1281	1102.5	783.0
1.60V	5357	4027	3384	2627	2234	1932	1547	1292	1112.0	787.5

Constant current discharge characteristics at 25 °C/77 °F Unit: A

Discharge Time F.V. (V/cell)	Discharge Time									
	5 Min	10 Min	15 Min	20 Min	25 Min	30 Min	40 Min	50 Min	60 Min	90 Min
1.80V	374	305	260	204	174	152	121.5	102.0	89.4	63.5
1.75V	412	327	274	213	182	158	124.5	105.0	90.8	64.5
1.70V	449	349	284	219	186	161	127.5	106.5	91.8	65.3
1.67V	476	362	291	222	188	163	128.6	107.1	92.6	65.7
1.65V	492	369	293	224	189	164	129.0	108.0	92.7	65.9
1.60V	521	388	295	227	192	165	130.5	109.8	93.3	66.3

All data and artworks shall be changed without prior notice, BB reserves the right to explain and update the information contained herein.